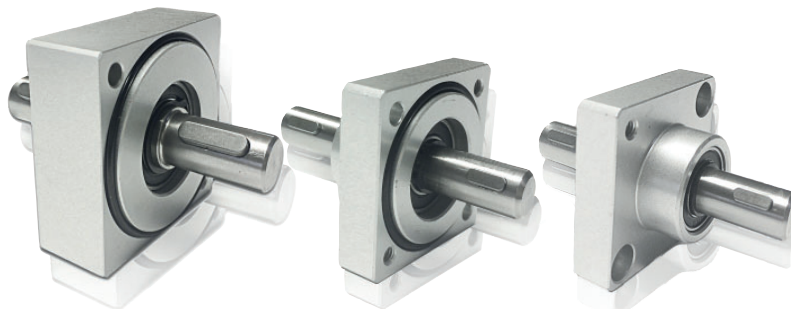


S-

SUPPORTI
SUPPORTS



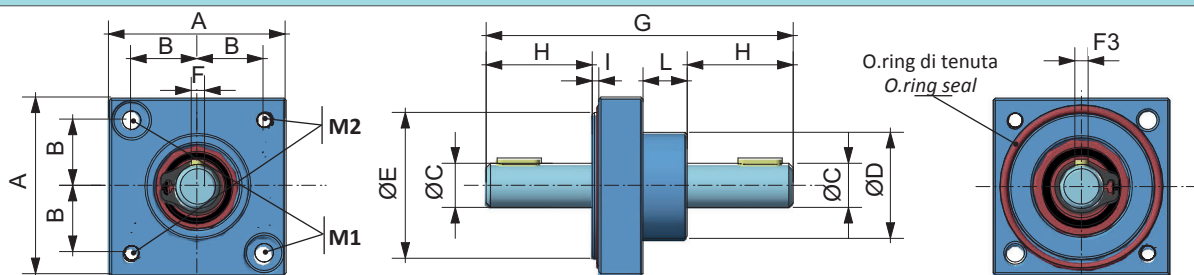
Supporti in alluminio, disponibili alberi $\varnothing 6$, $\varnothing 8$, $\varnothing 10$, $\varnothing 14$, $\varnothing 20$.

Possibilità di montaggio con fori filettati o fori per incasso viti. Utilizzabili singolarmente su viti, chiocciole, alberi oppure abbinabili ai nostri rinvii, trasmissioni flessibili ed indicatori, offrendo una soluzione semplice e completa per la movimentazione e visualizzazione del moto.

Support units in aluminium, available shafts $\varnothing 6$, $\varnothing 8$, $\varnothing 10$, $\varnothing 14$, $\varnothing 20$.

On request threaded bores or drillbores for screws. They can be used severally on screws, female screws, shafts or can be combined with our gearboxes, flexible shafts and position indicators, offering a simple and complete solution to transfer and check rotations.

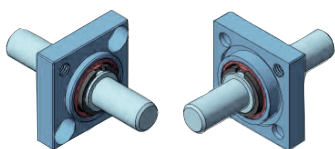
TABELLA DIMENSIONI - DIMENSIONS TABLE



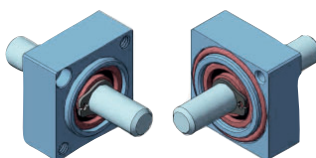
VERSIONE VERSIONS	DIM. FLANGIA FLANGE SIZE	INTERASSE FISSAGGIO FIXING DISTANCE	ALBERO SHAFT	CENTRAGGIO CENTERING	CENTRAGGIO CENTERING	LINGUETTA KEYWAY	TOTALE (L) TOTAL (L)	ALBERO (L) SHAFT (L)	CENTRAGGIO (L) CENTERING (L)	CENTRAGGIO (L) CENTERING (L)	FORO BORE	INCASSO COUNTERSUNK	FORO BORE
	A	B	$\varnothing C$	$\varnothing D$	$\varnothing E$	F	G	H	I	L	M1		M2
S2	20	7	6	14	14	=	35	12	4,5	1,5	$\varnothing 3,2(xM3)$	$\varnothing 5,5x3,5$	M3
S4	28	11	8	22	23,5	=	47,5	16	13	2	$\varnothing 3,2(xM3)$	$\varnothing 5,5x3,5$	M3X8
S5	40	15	10	24	33	3	69,5	24	11,5	10	$\varnothing 4,2(xM4)$	$\varnothing 7,5x4,5$	M4
S6	56	22	14	40	50	5	86,5	30	22	2	$\varnothing 5,2(xM5)$	$\varnothing 8,5x5,5$	M5x12
S8	70	27	20	60	60	6	111	40	25	2	$\varnothing 8,2(xM8)$	$\varnothing 13,9$	M8x15

MODELLI DISPONIBILI - AVAILABLE VERSION

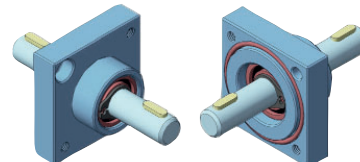
S2 = albero - shaft $\varnothing 6$



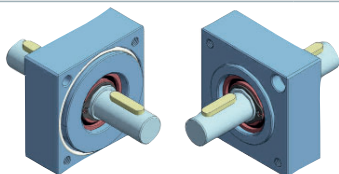
S4 = albero - shaft $\varnothing 8$



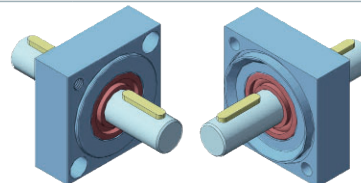
S5 = albero - shaft $\varnothing 10$



S6 = albero - shaft $\varnothing 14$



S8 = albero - shaft $\varnothing 20$



ESEMPIO DI ORDINAZIONE - PART CONFIGURATION:

S5

TIPO - TYPE

S2 (20x20) - S4 (28x28) - S5 (40x40) - S6 (56x56) - S8 (70x70)